

192 Monton Road, Monton, Manchester, M30 9PY
Tel: 0161 707 7584
Email: monton.sales@ascendproperties.com,
monton.lettings@ascendproperties.com
www.ascendproperties.com

Ascend

Built on higher standards



Heyfields, Worsley, M28

£1,350 PCM

Set in a picturesque location and within easy reach of the city centre, this development is ideal for both growing families and young professional couples.

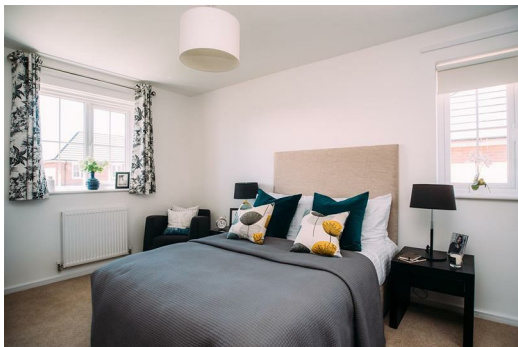
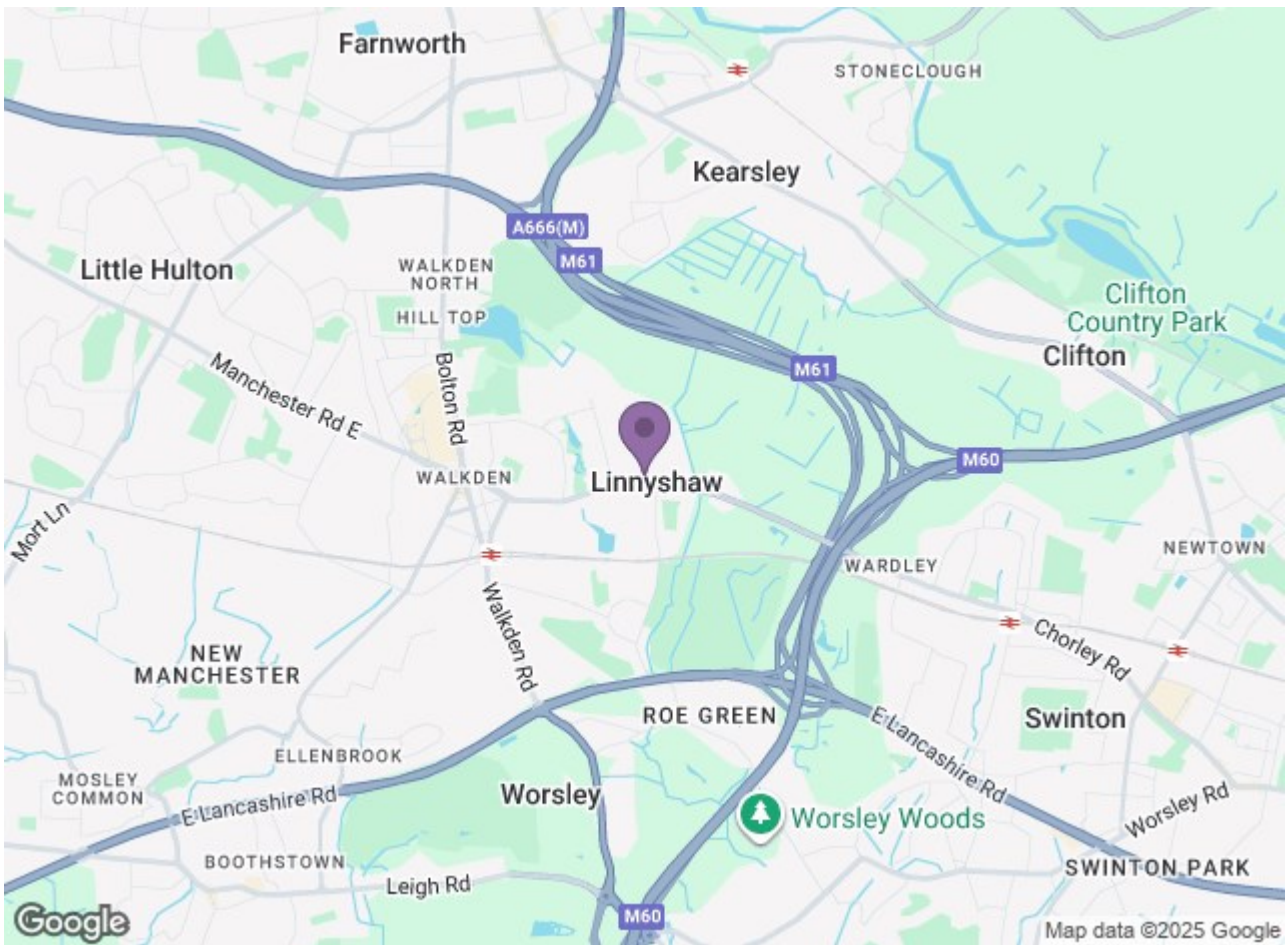
The beautifully designed Weaver makes a wonderful family home or a spacious haven for couples. The front door leads you straight into the hallway with a WC to one side. Further on is the contemporary open-plan kitchen and dining area. Beyond this is the comfortable living room with plenty of space and fabulous French windows that open out onto the garden. Great news if you enjoy al fresco dining and entertaining.

Upstairs you'll find a generously sized master bedroom, a double bedroom and a single bedroom. The family sized bathroom features a separate bath and shower. Modern and energy-efficient, the Weaver is built to high standards with beautiful flooring throughout, with fitted alarm systems for extra security and peace of mind.

Walkden offers the site a local town centre which is great for shopping, food and socialising. Heyfields is also a 25-minute drive from Manchester city centre, where a more extensive range of shops and restaurants will cater for all of your needs.

There are a number of schools local to the development and Walkden and Moorside train stations are less than 2 miles away with regular services to Manchester and other neighbouring areas.





Energy Efficiency Rating			Environmental Impact (CO ₂) Rating		
Band	Score	Rating	Band	Score	Rating
A	92	Very Good	A	88	Very Good
B	85	Good	B	81	Good
C	79	Fair	C	74	Fair
D	72	Fair	D	67	Fair
E	65	Fair	E	60	Fair
F	58	Fair	F	53	Fair
G	51	Fair	G	46	Fair
H	44	Fair	H	39	Fair
I	37	Fair	I	32	Fair
J	30	Fair	J	25	Fair
K	23	Fair	K	18	Fair
L	16	Fair	L	11	Fair
M	9	Fair	M	4	Fair
N	2	Fair	N	-3	Fair

Ascend
Built on higher standards